

Original Zone Deposit, Eastside Gold Project

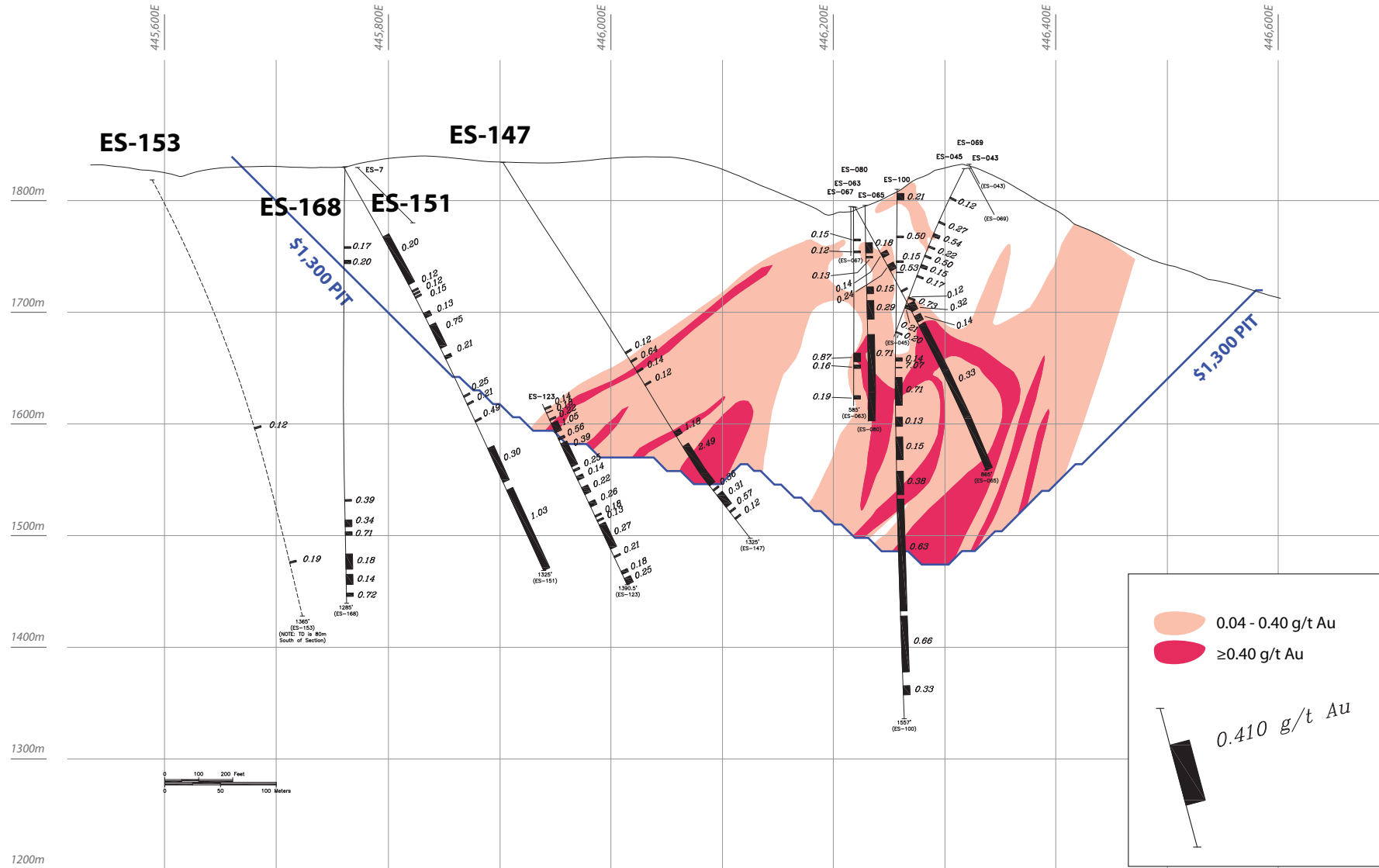
Section 4,228,740N

Section Shows \$1,300 Pit Outline and Ore Shells within Pit as Determined by MDA in 2016

← W

— Looking North —

E →



Original Zone Deposit, Eastside Gold Project

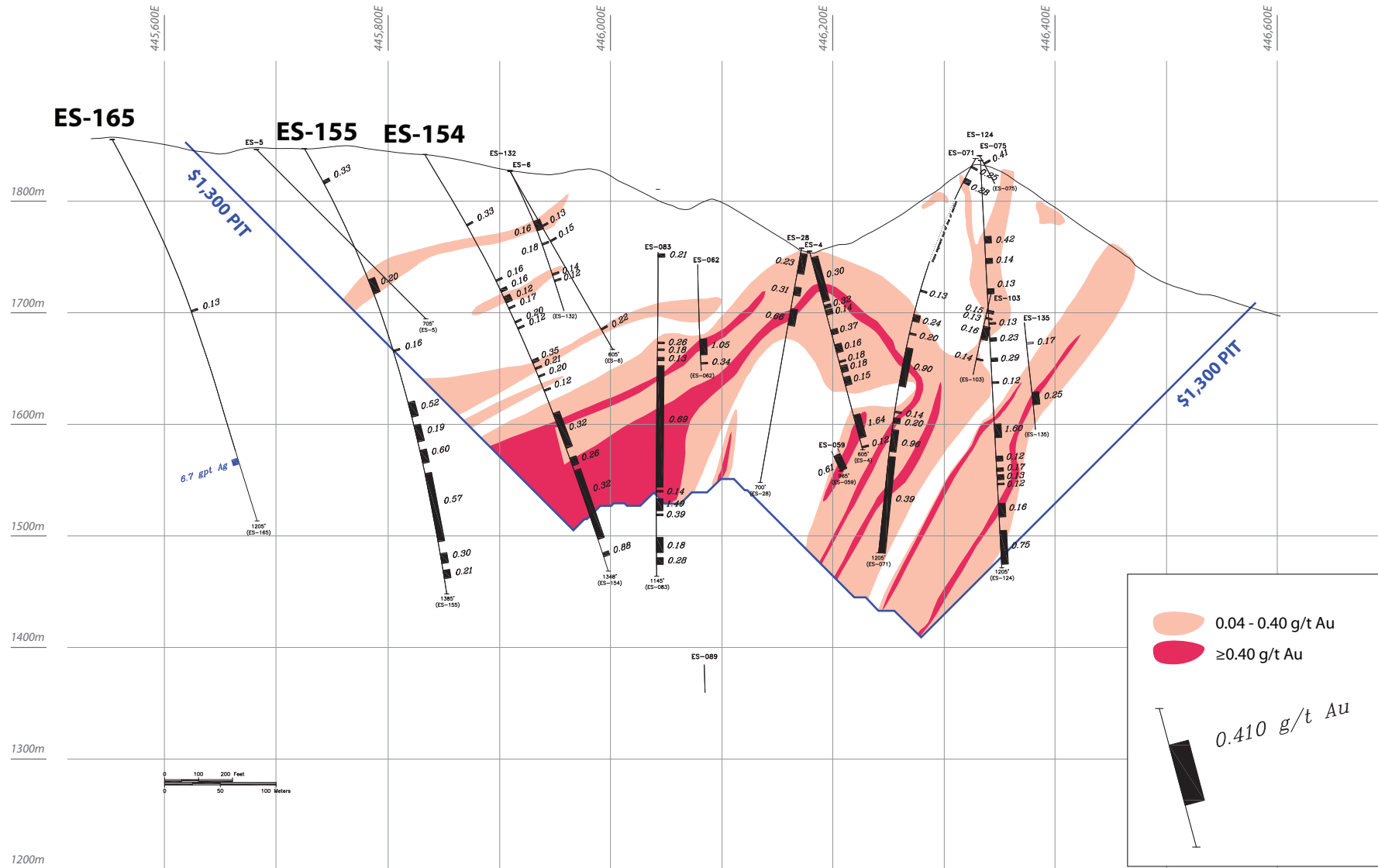
Section 4,228,900N

Section Shows \$1,300 Pit Outline and Ore Shells within Pit as Determined by MDA in 2016

W

Looking North

E



Original Zone Deposit, Eastside Gold Project

Section 4,228,900N

Section Shows Ore Shells as Interpreted from 2018 Drilling

W

Looking North

E

